



## DEMOJM User Manual



DEMOJMUM  
Rev. 1.00  
January 2008

 **freescale™**  
Alliance Member

## Purchase Agreement

P&E Microcomputer Systems, Inc. reserves the right to make changes without further notice to any products herein to improve reliability, function, or design. P&E Microcomputer Systems, Inc. does not assume any liability arising out of the application or use of any product or circuit described herein.

This software and accompanying documentation are protected by United States Copyright law and also by International Treaty provisions. Any use of this software in violation of copyright law or the terms of this agreement will be prosecuted.

All the software described in this document is copyrighted by P&E Microcomputer Systems, Inc. Copyright notices have been included in the software.

P&E Microcomputer Systems authorizes you to make archival copies of the software and documentation for the sole purpose of back-up and protecting your investment from loss. Under no circumstances may you copy this software or documentation for the purpose of distribution to others. Under no conditions may you remove the copyright notices from this software or documentation.

This software may be used by one person on as many computers as that person uses, provided that the software is never used on two computers at the same time. P&E expects that group programming projects making use of this software will purchase a copy of the software and documentation for each user in the group. Contact P&E for volume discounts and site licensing agreements.

P&E Microcomputer Systems does not assume any liability for the use of this software beyond the original purchase price of the software. In no event will P&E Microcomputer Systems be liable for additional damages, including any lost profits, lost savings or other incidental or consequential damages arising out of the use or inability to use these programs, even if P&E Microcomputer Systems has been advised of the possibility of such damage.

By using this software, you accept the terms of this agreement.

© 2008 P&E Microcomputer Systems, Inc. "MS-DOS" and "Windows" are registered trademarks of Microsoft Corporation. "Freescale" and "ColdFire" are registered trademarks of Freescale, Inc. "IBM" and "PowerPC" are registered trademarks of IBM corporation.

P&E Microcomputer Systems, Inc.  
P.O. Box 2044  
Woburn, MA 01888  
617-923-0053  
<http://www.pemicro.com>

Manual version 1.00

1	INTRODUCTION .....	1
1.1	Overview .....	1
1.2	Package Contents .....	1
1.3	Supported Devices .....	1
1.4	Recommended Materials On The Getting Started DVD-ROM .....	2
1.5	Handling Precautions .....	2
2	HARDWARE FEATURES .....	2
2.1	DEMOJM Base Board Features .....	2
2.2	On-Board Logic Analyzer .....	4
2.3	On-Board Virtual USB Port .....	4
2.4	DEMOJM Daughter Card Features .....	5
2.5	DEMOJM Jumper/Connector Quick Reference .....	5
3	GETTING STARTED WITH THE DEMOJM .....	7
4	SYSTEM SETUP .....	8
4.1	Overview .....	8
4.2	Operating System Requirements .....	8
4.3	Software Setup .....	8
4.4	Quick Startup .....	9
4.5	Hardware Setup .....	9
5	OPERATING MODES .....	13
5.1	Overview .....	13
5.2	Debug Mode .....	13
5.3	Run Mode .....	14
5.4	External BDM Mode .....	14
6	P&E EMBEDDED MULTILINK TOOLKIT PC APPLICATIONS .....	14
6.1	Logic Analyzer Application .....	14
6.2	Terminal Application .....	15
6.3	DEMOJM Unsecure Application .....	16
6.4	Accelerometer Demo Application .....	17
6.5	Serial Grapher Application .....	19

7	DEMONSTRATION MICROCONTROLLER APPLICATIONS.....	22
7.1	Logic Analyzer Application.....	22
7.2	Serial Accelerometer Application.....	22
8	JUMPER SETTINGS .....	23
8.1	System Power.....	23
8.2	Virtual Serial Port.....	23
8.3	CAN Port.....	23
8.4	Mini-USB Port .....	25
8.5	LED Display Port .....	29
8.6	Input and Reset Switches .....	29
8.7	3-Axis Accelerometer Jumper Settings.....	31
8.8	Buzzer.....	33
8.9	IIC Pull-up .....	33
8.10	Analog Input Potentiometer .....	34
8.11	Optional Jumpers For Various VDD And VSS.....	34
9	DEMOJM CODE DEVELOPMENT SOFTWARE .....	34
9.1	Using CodeWarrior With The DEMOJM .....	34
9.2	Using P&E Software With The DEMOJM .....	35
10	TRANSITIONING TO YOUR OWN TARGET .....	35
10.1	Hardware Solutions At A Glance .....	36
10.2	Working With P&E's USB Multilink .....	37
10.3	Working With P&E's Cyclone PRO .....	38
11	TROUBLESHOOTING.....	39
11.1	DEMOJM Is Undetected .....	39
11.2	CodeWarrior Installation Fails (WinDriver Error).....	40

# **1 INTRODUCTION**

## **1.1 Overview**

The DEMOJM is a low cost development system supporting Freescale MC9S08JM60 and MCF51JM128 64LQFP microcontrollers. It consists of a DEMOJM Base Board, a DC9S08JM60 Daughter Card and a DC51JM128 Daughter Card. P&E's Embedded Multilink circuitry on the DEMOJM board allows the processor connected to the DEMOJM to be debugged and programmed via USB from a PC. In addition, the demo board can be powered using the USB bus.

## **1.2 Package Contents**

The DEMOJM package includes the following items:

- DEMOJM Base Board with a DC9S08JM60 Daughter Card installed
- DC51JM128 Daughter Card
- Getting Started DVD - Getting started with the series of microcontrollers
- USB A-to-B Cable
- Mini-AB USB Kit
- USB Thumb Drive
- Quick Start Guide
- Freescale Warranty Card

## **1.3 Supported Devices**

The DEMOJM supports the following devices:

- MC9S08JM60CLH

- MCF51JM128VLH

## 1.4 Recommended Materials On The Getting Started DVD-ROM

- Freescale MC9S08JM60 reference manual and datasheet
- Freescale MCF51JM128 reference manual and datasheet
- DEMOJM Base Board and Daughter Card schematic
- P&E Embedded Multilink Toolkit applications
- P&E Embedded Multilink driver installation guide and resources

## 1.5 Handling Precautions

Take care to handle the package contents, including the DEMOJM Base Board, DC9S08JM60 Daughter Card, and DC51JM128 Daughter Card, in a manner such as to prevent electrostatic discharge.

# 2 HARDWARE FEATURES

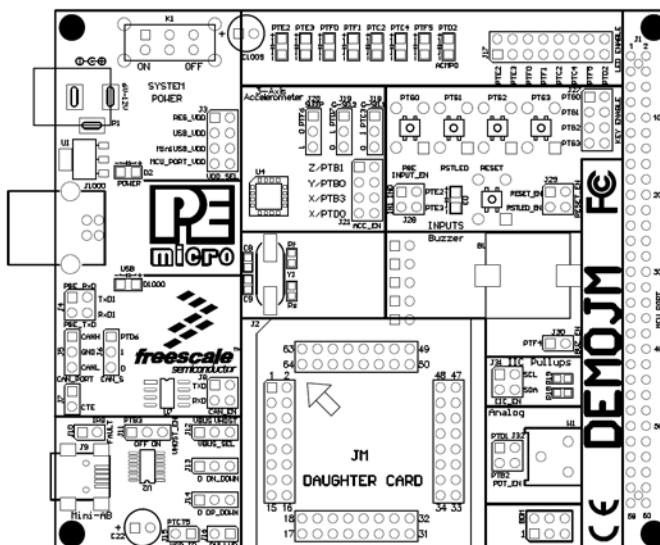
The DEMOJM is a demonstration and development system for Freescale's MC9S08JM60 and MCF51JM128 microcontrollers. Application development is quick and easy using P&E's Embedded Multilink circuitry and the included software tools and examples. An optional BDM port is provided to allow the use of an external BDM interface such as P&E's Cyclone PRO automated programmer or USB Multilink. The USB Multilink is functionally comparable to the DEMOJM's Embedded Multilink circuitry.

## 2.1 DEMOJM Base Board Features

- On-board Logic Analyzer
- On-board Virtual Serial Port
- Four (4) asymmetrically positioned 8x2 male connectors for interchangeable daughter cards
- P&E's Embedded Multilink circuitry populated on the underside
- SCI signals connected to P&E's Embedded Multilink through jumpers
- ON/OFF Power Switch w/ LED indicator

- A 6VDC to 12VDC power supply input barrel connector
- Power Input Selection Jumpers for selecting the input voltage source:
  - Power Input from Embedded Multilink to LDO regulator
  - Power Input from DC Power Jack to LDO regulator
  - Power Input from Mini-AB connector
  - Power Input from MCU\_PORT connector
- RESET Push Button and LED indicator w/ Enable
- User Features:
  - USB device mode and host mode support with Mini-AB USB connector
  - CAN Module w/Enable
  - 3-axis Accelerometer w/Enable
  - 8 User LED's w/ Enable
  - 4 User Push Buttons w/ Enable
  - 1 Piezo Buzzer w/ Enable
  - IIC Pullups w/ Enable
  - 10K Ohm POT w/ Enable
- Specifications:
  - Board Size 3.5 x 4.0
  - Daughter Card Size 1.4 x 1.5
  - Power Input:
    - USB Cable: 5VDC, 500mA max
    - DC Power Jack: 2.5/5.5mm barrel connector, 6VDC to

## 12VDC Center Positive



**Figure 2-1: DEMOJM Top Component Placement**

## 2.2 On-Board Logic Analyzer

The DEMOJM board has a built-in 2-channel logic analyzer which may be used to display captured data in real-time on a host PC. The logic analyzer channels (IN0/IN1) are connected to the PTE2 and PTE3 signals on the DEMOJM board by default via the J28 jumpers. The channels may be connected to any of the processor pins via wire jumpers (not included).

The Logic Analyzer Utility, included in the P&E Embedded Multilink Toolkit on the accompanying DVD-ROM, displays the logic analyzer signals on a PC.

## 2.3 On-Board Virtual USB Port

The DEMOJM board has a built-in virtual serial port which may be connected to the JM processor's SCI RXD/TXD. This allows certain PC applications to be able to connect in a serial fashion to the microcontroller without the actual use of serial port hardware.

The Terminal Window Utility, included in the P&E Embedded Multilink Toolkit



on the accompanying DVD-ROM, is a generic serial port utility which works with the DEMOJM virtual serial port or actual serial port hardware.

## 2.4 DEMOJM Daughter Card Features

- Four (4) bottom-mounted asymmetrically positioned 8x2 female connectors to mate with the DEMOJM Base Board
- A top-mounted MC9S08JM60CLH or MCF51JM128VLH chip

## 2.5 DEMOJM Jumper/Connector Quick Reference

### Default Jumper Settings

The following is a list of default jumper settings for DEMOJM board. The settings listed indicate the “on” (or installed) position.

### Default Jumper Settings

JUMPERS	SETTINGS
J3	3&4, 7&8
J4	1&2, 3&4
J6	2&3
J7	1&2
J8	1&2, 3&4
J11	1&2
J12	1&2
J13	2&3
J14	2&3
J17	ALL ON
J18	2&3

---

### Default Jumper Settings

J19	2&3
J20	2&3
J21	1&2, 3&4, 5&6
J24	1&2
J27	1&2, 3&4, 5&6, 7&8
J28	1&2, 3&4
J29	1&2, 3&4
J30	1&2
J31	1&2 3&4
J32	1&2 3&4

## MCU Port Connector Pinout

The following is the pinout for the MCU Port connector on the DEMOJM board.

VDD	1	2	IRQ/TPMCLK
VSS	3	4	RESET
PTE0/TxD1	5	6	BKGD/MS
PTE1/RxD1	7	8	VUSB33
PTG0/KBIP0	9	10	PTB0/MISO2/ADP0
PTG1/KBIP1	11	12	PTB1/MOSI2/ADP1
PTE2/TPM1CH0	13	14	PTB2/SPSCK2/ADP2
PTE3/TPM1CH1	15	16	PTB3/SS2/ADP3
PTE5/MOSI1	17	18	PTB4/KBIP4/ADP4
PTE4/MISO1	19	20	PTB5/KBIP5/ADP5
PTE6/SPSCK1	21	22	PTB6/ADP6
PTE7/SS1	23	24	PTB7/ADP7
PTF0/TPM1CH2	25	26	PTC0/SCL
PTF1/TPM1CH3	27	28	PTC1/SDA
PTF2/TPM1CH4	29	30	PTG2/KBIP6
PTF3/TPM1CH5	31	32	PTG3/KBIP7_J1
VREFH	33	34	PTF4/TPM2CH0
VREFL	35	36	PTF5/TPM2CH1
PTD0/ADP8/ACMP+	37	38	PTC5/RxD2
PTD1/ADP9/ACMP-	39	40	PTC3/TxD2
PTD2/KBIP2/ACMP041	41	42	PTG4/XTAL
PTD3/KBIP3/ADP10	43	44	PTG5/EXTAL
PTD4/ADP11	45	46	PTA0
PTD5	47	48	PTA1
PTD6	49	50	PTA2
PTD7	51	52	PTA3
PTC2	53	54	PTA4
PTC4	55	56	PTA5
PTC6	57	58	PTF6
NC	59	60	PTF7

Figure 2-2: MCU Port Connector Pinout

## 3 GETTING STARTED WITH THE DEMOJM

The DEMOJM is a low-cost board targeting quick microcontroller evaluation. The board includes two plug-in daughter cards to demonstrate the ease of migration between the Flexis JM60, 8-bit S08 and Flexis JM128, 32-bit ColdFire V1 microcontrollers. The board also includes a power terminal to measure the ultra-low power consumption of the JM devices.

Please refer to the DEMOJM Quick Start Guide and Labs for instructions on how to install software, connect the DEMOJM to your PC, and run quick demonstrations.

## **4 SYSTEM SETUP**

### **4.1 Overview**

P&E's Embedded Multilink driver is required to operate the DEMOJM using a PC. The Embedded Multilink driver should be installed with the CodeWarrior Development Studio software or from the DEMOJM Resources in the Getting Started DVD-ROM before the PC is connected to the DEMOJM.

### **4.2 Operating System Requirements**

The following are the resources required to run the CodeWarrior Development Studio and the DEMOJM:

- A PC-compatible system running Windows 2000, Windows XP, or Windows Vista
- 128MB of available system RAM, and 1GB of available hard disk space
- A DVD-ROM drive for software installation
- A USB port

### **4.3 Software Setup**

#### **4.3.1 Installing CodeWarrior Development Studio**

To install the CodeWarrior Development Studio, follow the instructions on the DVD-ROM.

#### **4.3.2 Installing P&E Resources**

Use the DEMOJM Resources in the DVD-ROM to access and install P&E resources for the DEMOJM. These materials are not required for operation. The DEMOJM Resources in the Getting Started DVD-ROM contains the following support materials:

- DEMOJM Embedded Multilink hardware interface driver

- DEMOJM User Manual (this document)
- DEMOJM Base Board and Daughter Cards Schematics
- DEMOJM Component Breakdown List
- P&E Embedded Multilink Toolkit PC Applications
- P&E Evaluation Software
- Links to Freescale documentation, P&E Discussion Forums, and DEMOJM FAQs.

## **4.4 Quick Startup**

Only a few steps are required to get the DEMOJM up and running. Please reference the Quick Start Guide.

## **4.5 Hardware Setup**

### **4.5.1 First-Time Connection**

The DEMOJM may be connected to a PC through a USB port. Connection steps are listed below in typical order:

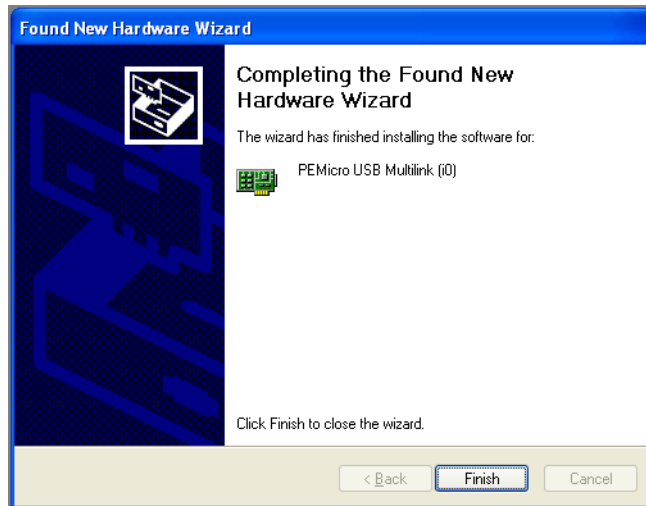
1. Install the required software, as described in the previous section.
2. Make sure the jumper USB\_VDD for VDD\_SEL is installed.
3. Plug the USB cable A-M connector into a free USB port of the PC.
4. Plug the USB cable B-M connector into the USB connector on the DEMOJM Base Board.
5. The operating system will recognize P&E's Embedded Multilink circuitry and P&E's USB to Serial circuitry. Depending on the operating system, you may see the "Found New Hardware Wizard" dialog to assist you with software installation for "PEMicro USB Multilink (i0)." On Windows XP (SP2), the following dialog will appear:



**Figure 4-1: Found New Hardware Wizard Dialog (1 of 4)**

Select the “Install the software automatically (Recommended)” option and click the “Next” button.

6. Windows will install the driver files to your system. At the end of the installation, the following dialog box will appear:



**Figure 4-2: Found New Hardware Wizard Dialog (2 of 4)**

Click the "Finish" button to exit the current "Found New Hardware Wizard".

7. Depending on the operating system, you may see the "Found New Hardware Wizard" dialog again to assist you with software installation for "PEMicro USB Serial Port (i1)." On Windows XP (SP2), the following dialog will appear:

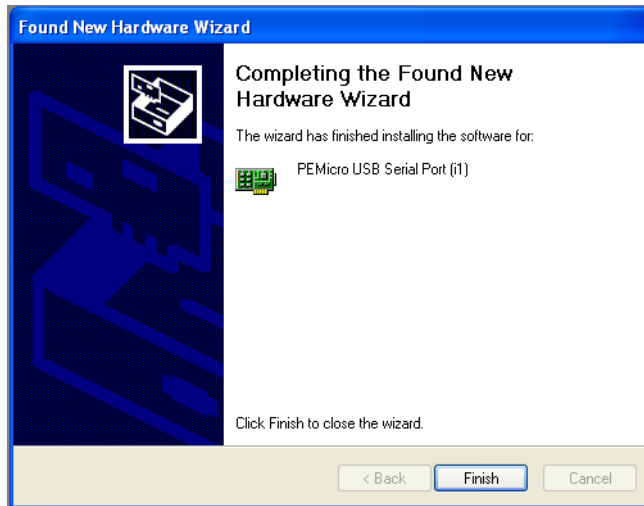


**Figure 4-3: Found New Hardware Wizard Dialog (3 of 4)**

Select the “Install the software automatically (Recommended)” option and click the “Next” button.

8. Windows will install the driver files to your system. At the end of the installation, the following dialog box will appear:





**Figure 4-4: Found New Hardware Wizard Dialog (4 of 4)**

Click the “Finish” button to exit the “Found New Hardware Wizard.”

If the DEMOJM hardware interface driver is now properly installed on your system, the green USB LED on the DEMOJM Base Board should be illuminated. In addition, if you turn on the system power of the DEMOJM you will see the red Power LED illuminate.

## **5 OPERATING MODES**

### **5.1 Overview**

The DEMOJM’s Embedded Multilink circuitry, featured hardware components, and optional external BDM header make it a versatile development tool. Below are some of the featured operating modes of the DEMOJM.

### **5.2 Debug Mode**

A host communicates with the DEMOJM through the Embedded Multilink circuitry. Either the CodeWarrior Development Studio or P&E’s HCS08/CFV1 software tools will work with the DEMOJM. Please refer to **Section 9 - DEMOJM CODE DEVELOPMENT SOFTWARE** for more information.

### 5.3 Run Mode

The DEMOJM's rich component list empowers it to perform a variety of tasks. Once an application is developed, debugged, and programmed properly into the JM internal flash memory, it can run with or without connecting to a host.

### 5.4 External BDM Mode

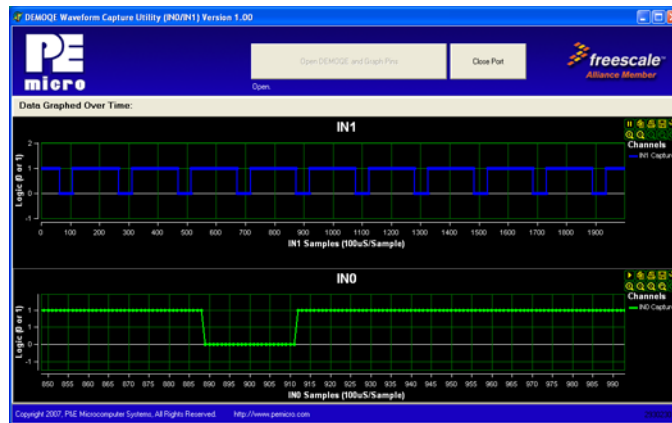
The DEMOJM has an optional BDM header for debugging and programming the on-board JM device using an external BDM hardware tool, such as P&E's USB Multilink or Cyclone PRO. Please refer to **Section 10 - TRANSITIONING TO YOUR OWN TARGET** for more information. A user can take advantage of this mode to develop a target-specific JM system and compare it with the DEMOJM when necessary.

## 6 P&E EMBEDDED MULTILINK TOOLKIT PC APPLICATIONS

P&E provides several Windows PC-based applications which work with the DEMOJM board. These applications are collectively referred to as the P&E Embedded Multilink Toolkit. The following applications are included in the toolkit:

### 6.1 Logic Analyzer Application

The DEMOJM board has a built-in two-channel logic analyzer. This analyzer allows the IN0 and IN1 signals to be captured by the PC and displayed for the user. The IN0 and IN1 signals may be connected to any of the MCU signals which the user would like to view. By default, they are connected to the PTE2 and PTE3 pins of the MCU by jumper J28. At the time of this release, the logic analyzer runs at a capture rate of 10khz.



**Figure 6-1: Logic Analyzer Application**

This PC-based application is used to display the logic analyzer data on the PC. The logic analyzer data is displayed in real-time and each waveform may be paused, zoomed, and printed.

To start using this application, please plug in a USB cable into the DEMOJM board. Once the USB and Power LEDs light up, indicating the proper enumeration on the USB port, click on the Open DEMO and Graph Pins button. The logic channel graphs should be reflecting data captured from the IO pins connected to the IN0 and IN1 header pins on the DEMOJM evaluation board.

If the microcontroller-based Logic Analyzer Application is programmed into the MCU, the IN0 channel will show the PWM output on pin PTE2, whose duty cycle is controlled by the potentiometer (W1). The IN1 channel shows the PWM output on channel PTE3.

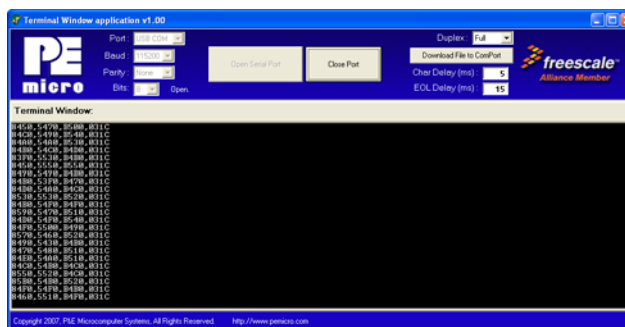
This PC-based application is included on the DVD-ROM that accompanies the DEMOJM, and may also be found at:

<http://www.pemicro.com/fixedlinks/demotoolkit.cfm>.

## 6.2 Terminal Application

This PC-based application acts as a standard serial port terminal application on the PC. It works with standard serial ports as well as the virtual serial port on the DEMOJM board. The application includes settings to adjust the COM port number, baud rate, parity, and number of data bits. There is a button to

take a file on the PC and transmit it out of the serial port. There are also delays which are automatically inserted into the transmission output to prevent overruns. It is recommended that these defaults not be changed.



**Figure 6-2: Terminal Application**

The terminal window may be set for full duplex or half duplex. In full duplex mode, only received characters are displayed in the terminal window. In half duplex mode, both transmitted and received characters are displayed.

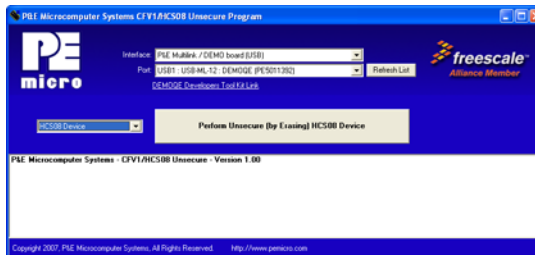
To start using this application, please choose COM or virtual USB COM settings from the drop down Port menu. This specifies the port on the evaluation board that will be used for serial data transmission. Please make sure that the jumpers on header J4 are set accordingly. Prior to starting serial data capture, please specify the Baud, Parity and Bits settings to reflect the parameters at which your serial communication interface is operating. Once your port settings are configured, please plug a USB or DB9 serial cable into the evaluation board and click on the Open Serial Port button.

This PC-based application is included on the DVD-ROM that accompanies the DEMOJM, and may also be found at:

<http://www.pemicro.com/fixedlinks/demotoolkit.cfm>.

## 6.3 DEMOJM Unsecure Application

This application allows secure CFV1 and HCS08 microcontrollers to be unsecured. The Unsecure application will erase a secure device to make it unsecure. This application works with the DEMOJM board as well as other user hardware connected to the PC via the USB Multilink or Cyclone PRO hardware interfaces.



**Figure 6-3: Unsecure Application**

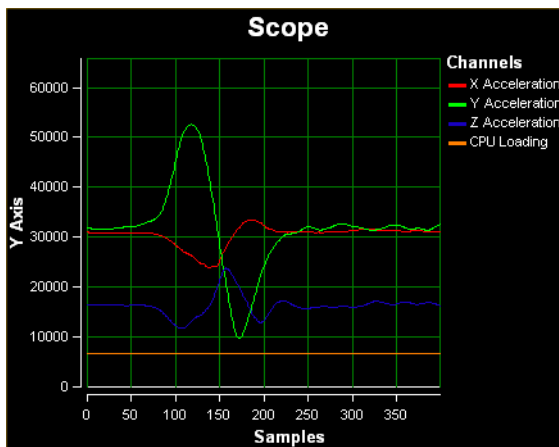
In order to unsecure a device with this application, please specify the hardware interface that you are using. If your P&E Multilink or Cyclone PRO is successfully detected, the name of a corresponding device will appear in the Port text box. Please select HCS08 or CFV1 from the Select Architecture drop down menu and press the Perform Unsecure button. The application will finish unsecuring and erasing the device shortly thereafter.

This PC-based application is included on the DVD-ROM that accompanies the DEMOJM, and may also be found at:

<http://www.pemicro.com/fixedlinks/demotoolkit.cfm>.

## **6.4 Accelerometer Demo Application**

This PC-based application will graph serial data output from the microcontroller-based serial accelerometer application. The graphed data includes the magnitude of the X, Y, and Z accelerometer signals, as well as the current processor loading. For this application to work properly, the microcontroller-based serial accelerometer application must be programmed into the microcontroller which is plugged into the DEMOJM board.



**Figure 6-4: Accelerometer Demo Application**

The data that is graphed may come from either the PC serial port or the virtual serial port on the DEMOJM board. The serial port of the microcontroller on the DEMOJM board is routed to the virtual COM port with the setting of jumper J4. To properly configure accelerometer and potentiometer resources on the DEMOJM evaluation board, please make sure that these headers are populated with jumpers in the following manner: J21 (Z/PTB1 -populated, Y/PTB0 –populated, Y/PTB3 -populated, X/PTD0 –unpopulated); J18 (set to 0); J19 (set to 0); J20 (set to 1); J32 (PTB2 –populated, PTD1 –populated).

To start using this application, please choose COM or virtual USB COM settings from the drop-down Port menu. By doing so, you are specifying the port on the evaluation board that will be used for transmitting captured accelerometer data via a COM or USB serial port. Please make sure that jumper J4 is set accordingly. Prior to starting serial data capture, please specify the Baud setting to reflect the parameter at which your serial communication interface is operating. Once your port settings are configured, please plug a USB or DB9 serial cable into the evaluation board and click on the Open Serial Port and Start Demo buttons. After the serial data is captured by the application you will see raw data in the Terminal Window. In the meantime, the Data Snapshot window will display the accelerometer and potentiometer data levels in the form of a bar graph. The graphing of data can be paused and the scale of the X and Y axes can be changed via a tool bar located in the top right corner of the Accelerometer Demo Application.

This PC-based application is included on the DVD-ROM that accompanies the DEMOJM, and may also be found at:

<http://www.pemicro.com/fixedlinks/demotoolkit.cfm>.

## **6.5 Serial Grapher Application**

This PC-based application is a more generalized version of the accelerometer demo application. It may be used with the microcontroller-based serial accelerometer application or custom microcontroller code which transmits data in the correct format. The serial graphing utility allows incoming data on the PC serial port (or one of P&E's virtual serial ports) to be automatically graphed in time or displayed as a series of bar graphs. The virtual serial port exists on several of P&E's Embedded Multilink designs including the DEMOJM board.

To start using this application, please choose COM or virtual USB COM settings from the drop-down Port menu. By doing so, you are specifying the port on the evaluation board that will be used for transmitting captured accelerometer data via a COM or USB serial port. Please make sure that jumper J4 is set accordingly. Prior to starting serial data capture, please specify the Baud setting to reflect the parameter at which your serial communication interface is operating. Once your port settings are configured, please plug a USB or DB9 serial cable into the evaluation board and click on the Open Serial Port and Start Demo buttons. The graphing of data can be paused and the scale of the X and Y axes can be changed via a tool bar located in the top right corner of the Serial Grapher Application.

All data to be displayed must be in hexadecimal format. The data can be accepted and displayed either as incoming byte values (\$00-\$FF) or word values (\$0000-\$FFFF). The data format indicates whether the data is byte or word data. The graphical components automatically size their range depending upon the incoming data.

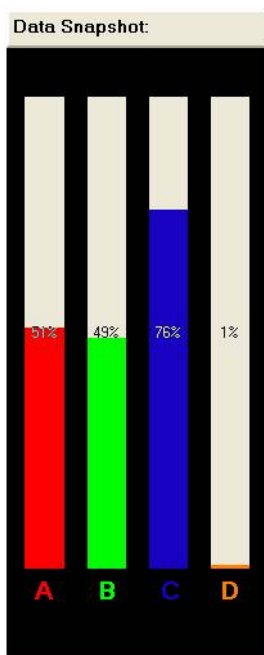
This PC-based application is included on the DVD-ROM that accompanies the DEMOJM and may also be found at:

<http://www.pemicro.com/fixedlinks/demotoolkit.cfm>.

### **6.5.1 Visual Components**

The Bar Graph has four separate bars A, B, C, and D. On each bar a percentage value is displayed which indicates the current value relative to the full range. A byte value of \$7F (max is \$FF) would show up as approximately

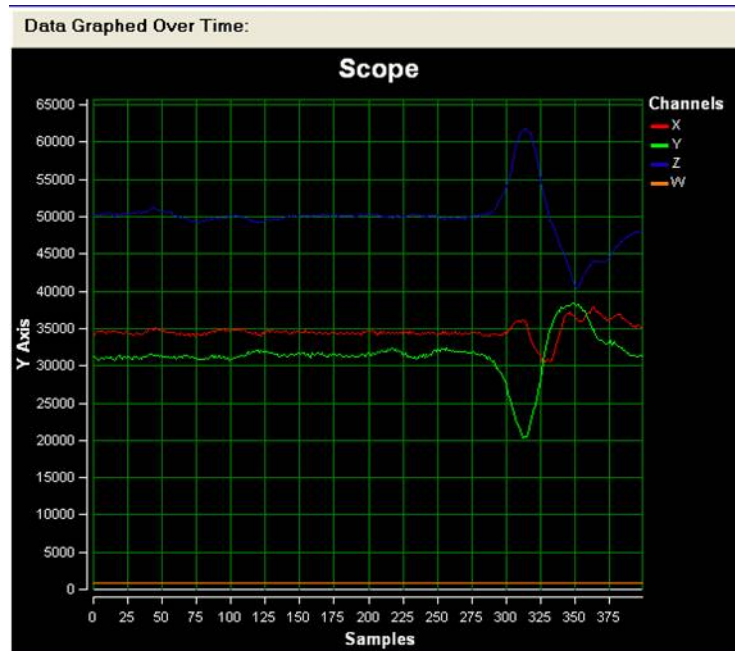
50% as would a word value of \$7FFF (max is \$FFFF). As can be seen in the data formatting section, all four bars must be written at the same time. The bars are shown here:



**Figure 6-5: Serial Grapher Bar Graph**

The graphing component shows four waveforms, X, Y, Z, and W. The magnitude axis either has a range of \$00-\$FF (if byte values are incoming on the serial port) or \$0000-\$FFFF (if word values are incoming). Each new set of values which comes through the serial port is added to the far right side of the graph and the rest of the data values are moved to the left. The vertical axis displays the incoming data as the magnitude of each waveform, and the horizontal axis displays the number of samples. The graph has a limited size, so older samples will eventually fall off the left part of the graph. As can be seen in Data Format, each incoming data command affecting the graphing component must have new data for all four waveforms. An example graph is shown here:





**Figure 6-6: Serial Grapher Graphing Component**

## 6.5.2 Data Format

The data format is broken into two sections depending upon whether the incoming data is in byte format or word format.

### 6.5.2.1 Byte Formatted Data

There are two commands which may be accepted. Both commands must end in the special characters #0D and #0A which are CR (carriage return) and LF (line feed). The accepted commands are:

*WnnZnnYnnXnn*

The nn values are 00-FF and correspond in order to the data displayed on the following graph lines: W, Z, Y, X.

*AnnBnnCnnDnn*

The nn values are 00-FF and correspond in order to the data displayed on the following bar graphs lines: A, B, C, D.

### 6.5.2.2 Word Formatted Data

There are three commands which may be accepted. All commands must end in the special characters #0D and #0A which are CR (carriage return) and LF (line feed). The accepted commands are:

*nnnn,nnnn,nnnn,nnnn*

The nnnn values are 0000-FFFF and correspond in order to the data displayed on both the graph and bar graphs as follows: X/A, Y/B, Z/C, W/D.

*nnnn:nnnn:nnnn:nnnn*

The nnnn values are 0000-FFFF and correspond in order to the data displayed the graphing component as follows: X, Y, Z, W.

*nnnn=nnnn=nnnn=nnnn*

The nnnn values are 0000-FFFF and correspond in order to the data displayed on the bar graph component as follows: A, B, C, D.

## 7 DEMONSTRATION MICROCONTROLLER APPLICATIONS

The following microcontroller applications are designed to run on the JM processors.

### 7.1 Logic Analyzer Application

The function of the Logic Analyzer Application is to play a different tone and illuminate a different LED for each of the buttons pressed on the DEMOJM board. The potentiometer controls the intensity of an LED on the DEMOJM board, via a PWM signal.

### 7.2 Serial Accelerometer Application

This microcontroller application samples the state of the on-board three-axis accelerometer using on-chip A/D converter channels. This data is converted into ASCII characters and sent out using the serial pins of the JM processor. These serial pins may be connected to P&E's virtual serial port (which is part of the Embedded Multilink design). Jumper J4 controls this connection.

P&E has two PC-based P&E Embedded Multilink Toolkit applications which allow the serial port data generated by this application to be graphed. These are documented in **Section 6.4 - Accelerometer Demo Application** and **Section 6.5 - Serial Grapher Application**.

## 8 JUMPER SETTINGS

### 8.1 System Power

The JM processor may obtain its power from the on-board regulator, USB port, Mini-USB port, or through MCU\_PORT J1. The on-board regulator obtains its input from a 2.5mm barrel connector. The on-board regulator can regulate the output to 5V. Power input is selected by using the J3 headers. Select the USB port to supply microcontroller VDD. This is the default setting.



Select the MCU\_PORT to supply microcontroller VDD. This setting also allows power to be supplied to the target connected to the MCU\_PORT. By default this jumper is installed.

**Figure 8-1: VDD\_SELECT Option Header (J3)**

### 8.2 Virtual Serial Port

The DEMOJM board has a built-in virtual serial port which may be connected to the JM processor's SCI RXD1/TXD1. This allows certain PC applications to be able to connect in a serial fashion to the microcontroller without the actual use of serial port hardware. It can be enabled or disabled by installing or removing the jumpers of J4.



**Figure 8-2: Virtual Serial Port Header (J4)**

### 8.3 CAN Port

The DEMOJM board has implemented a CAN port. Header J5 offers the CANH, GND, and CANL signals. Header J6 selects input for high speed mode or silent mode. J7 enables CAN transmission. J8 enables the CAN port.



**Figure 8-3: CAN Signals (J5)**

### 8.3.1 J6 – CAN operation mode selection

A jumper across 1 & 2 selects silent mode. This selection also allows the microcontroller to control the operation mode via PTD6.



A jumper across 2 & 3 selects high speed mode. This is the default setting.



**Figure 8-4: Can Operation Mode Selection (J6)**

### 8.3.2 J7 – CAN Transmit Enable CTE

By default, this jumper is installed to enable CAN transmission.



**Figure 8-5: CAN Transmit Enable (J7)**

### 8.3.3 J8 – CAN Port Enable CAN\_EN

Enables CAN port. By default, the jumpers are installed.



**Figure 8-6: CAN Port Enable CAN\_EN**

## 8.4 Mini-USB Port

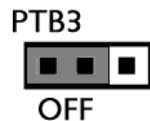
The DEMOJM board integrates a Mini-AB USB port. It can operate in both device mode and host mode using jumper settings.

### 8.4.1 J10 – USB Host FAULT signal.

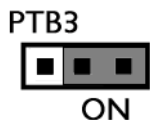
If the jumper is installed, the FAULT signal is connected to the microcontroller's IRQ pin. By default, this jumper is not installed.

### 8.4.2 J11- USB Host Voltage Enable VHOST\_EN

This jumper enables or disables USB host mode power generation.



A jumper across 1 & 2 disables USB host power generation. This selection also pulls up PTB3 and allows the microcontroller to use PTB3 to control the USB host power generation. Pay extra attention to this signal as it is shared with the accelerometer's X-axis. This is the default setting.



A jumper across 2 & 3 enables USB host power generation.

**Figure 8-7: USB Host Voltage Enable VHOST\_EN (J11)**

### 8.4.3 J12 – Mini-USB Bus power selection



A jumper across 1 & 2 indicates that the Mini-USB will be powered from the bus. This is the default setting.



A jumper across 2 & 3 indicates that the Mini-USB will provide power as a host.

**Figure 8-8: Mini-USB Bus power selection (J12)**

### 8.4.4 J13 – Determines whether USBDN is pulled down directly or controlled by USB\_DN\_DOWN signal



A jumper across 1 & 2 pulls down USBDN directly.



A jumper across 2 & 3 indicates that the USB\_DN\_DOWN signal controls the pull down of USBDN signal. This is the default setting.

**Figure 8-9: USBDN Setting (J13)**

#### 8.4.5 J14 – Determines whether USBDP is pulled down directly or controlled by USB\_DP\_DOWN signal



A jumper across 1 & 2 pulls down USBDP directly.



A jumper across 2 & 3 indicates that the USB\_DP\_DOWN signal controls the pull down of USBDP signal. This is the default setting.

**Figure 8-10: USBDP Settings (J14)**

#### 8.4.6 J15 – USB\_ID signal connects to PTC5 of microcontroller

By default, the jumper is not installed.



**Figure 8-11: USB\_ID signal connect (J15)**

#### 8.4.7 J16 – USB\_PULLUP may pull up USBDP signal to microcontroller USB\_PULLUP signal

By default this jumper is not installed.



**PULL-UP**

**Figure 8-12: USB\_PULLUP (J16)**

In summary, use the following jumper settings for Mini-USB device mode operation:

J11: 1&2

J12: 1&2

J13: 2&3

J14: 2&3

Use the following jumper settings for Mini-USB host mode operation:

J10: 1&2

J11: 2&3

J12: 2&3

J13: 1&2

J14: 1&2

J15: 1&2

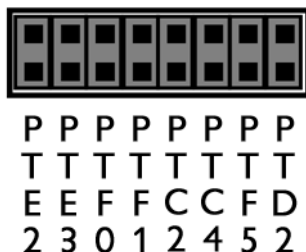
J16: 1&2



## 8.5 LED Display Port

The DEMOJM has 8 LEDs connected to signals PTE2, PTE3, PTF0, PTF1, PTC2, PTC4, PTF5, and PTD2. They can be enabled or disabled by installing or removing the corresponding jumper, J17, in the LED\_ENABLE header.

### 8.5.1 J17 - LED Display Enable Port LED\_ENABLE



Enables all LED outputs. This is the default setting.

**Figure 8-13: LED Display Enable Header LED\_ENABLE (J17)**

## 8.6 Input and Reset Switches

The DEMOJM has 4 switches that are connected to signals PTG0, PTG1, PTG2, and PTG3 respectively, and are enabled or disabled by the 4 corresponding jumpers KEY\_ENABLE (J27).

The DEMOJM has an option to connect two signals, PTE2 and PTE3, to the Embedded Multilink for signal processing. The two signals are connected or disconnected to IN0 or IN1 correspondingly via jumper P&E INPUT\_EN (J28).

The DEMOJM has one Reset switch and one Reset LED associated with it. These are enabled or disabled by the two corresponding jumper RESET\_EN (J29).

### 8.6.1 J28 - P&E's Logic Analyzer Inputs IN0/IN1

The logic analyzer inputs are marked on one side of the J28 jumper. The inputs allow P&E's PC-based logic analyzer application to display these

signals in real-time.



By installing both jumpers, the logic analyzer pins IN0 and IN1 will be connected to PTE2 and PTE3 respectively.



By removing these jumpers IN0 and IN1 will be unconnected. The user may connect these signals, via wires, to any other signals on the processor which they wish to view on the PC.

**Figure 8-14: Jumper Settings for Input Signals to P&E's Embedded Multilink, P&E INPUT\_EN (J28)**

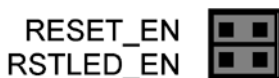
#### 8.6.2 J27 - Light Touch Switch Enable Jumper KEY\_ENABLE



Enables the corresponding switch. Each jumper may be individually installed or removed. By default, all jumpers are installed to enable all the switches.

**Figure 8-15: Jumper Settings for Light Touch Switches KEY\_ENABLE (J27)**

#### 8.6.3 J29 - Reset Switch Enable and Reset LED Display Enable Jumper RESET\_EN



Enables the Reset Switch and the Reset LED Display. Each jumper may be individually installed or removed. This is the default setting.

**Figure 8-16: Reset Switch and Reset LED enable Jumper (J29)**

## 8.7 3-Axis Accelerometer Jumper Settings

The DEMOJM integrates a 3-axis accelerometer. Its enable/disable, sensitivity levels, and output signal connections are all jumper-settable. Jumpers J18, J19, J20 and J21 are associated with the accelerometer.

### Accelerometer G-Select Pin Descriptions

G-SEL2	G-SEL1	g-Range	Sensitivity
0	0	1.5g	800 mV/g
0	1	2g	600 mV/g
1	0	4g	300 mV/g
1	1	6g	200 mV/g

#### 8.7.1 J18 - Accelerometer g-Select1 Jumper G-SEL1



Selects g-Select1 to be logic low. This is the default setting.



Selects g-Select1 to be logic high. A user may control PTC3 in firmware to set g-Select1.

**Figure 8-17: Accelerometer g-Select1 Jumper settings (J18)**

### 8.7.2 J19 - Accelerometer g-Select2 Jumper G-SEL2



Selects g-Select2 to be logic low. This is the default setting.



Selects g-Select2 to be logic high. A user may control PTD7 in firmware to set g-Select2

**Figure 8-18: Accelerometer g-Select2 Jumper settings (J19)**

### 8.7.3 J20 - Accelerometer Sleep Mode Select Jumper SLEEP (J20)



Enables the 3-axis accelerometer. This is the default setting.



Puts the 3-axis accelerometer into sleep mode. The user may control PTF6 in firmware to enable or disable the accelerometer.

**Figure 8-19: Accelerometer Sleep Mode Jumper settings (J20)**

#### 8.7.4 J21 - Accelerometer 3-axis Signals Connection Jumper ACC\_EN



The accelerometer output signals are jumper-setable to PTB1, PTB0, PTB3, and PTD0. PTB3 and PTD0 share the same X-axis signal. By default, the X-axis signal is connected to PTB3.

**Figure 8-20: Accelerometer Signal Output ACC\_EN (J21)**

### 8.8 Buzzer

The DEMOJM integrates a Piezo Transducer whose resonant frequency is 4.0 KHz. Jumper J30 connects to PTF4 to control this buzzer.

#### 8.8.1 J30 - Buzzer enable jumper BUZ\_EN



Enables Buzzer to be controlled by PTF4. This is the default setting.

**Figure 8-21: Buzzer Enable Jumper Settings BUZ\_EN (J30)**

### 8.9 IIC Pull-up

The DEMOJM provides external pull-up resistors for SCL and SDA lines, enabled by installing the corresponding jumpers on J31. By default both jumpers are installed.

#### 8.9.1 J31 - IIC Pullup Enable Jumpers IIC\_EN



Enables IIC external pullup. This is the default setting.

**Figure 8-22: IIC External Pullup Enable IIC\_EN (J31)**

## 8.10 Analog Input Potentiometer

The DEMOJM provides an easy access 10KOhm potentiometer whose output may be connected to PTD1 and/or PTB2, selectable by J32, POT\_EN.

### 8.10.1 J32 - Potentiometer Output Selection Jumpers POT\_EN



Selects the potentiometer output connection. By default they are both connected.

**Figure 8-23: Potentiometer Output Selection Jumpers POT\_EN (J32)**

## 8.11 Optional Jumpers For Various VDD And VSS

The DEMOJM provides 5 jumpers, J22 through J26, for different VDD and VSS connections on the bottom of the board. By default, they are not populated and are shorted correspondingly with zero-ohm resistors in parallel, except J24 which is populated. The user may take off the zero-ohm resistor and install a corresponding jumper.

# 9 DEMOJM CODE DEVELOPMENT SOFTWARE

The DEMOJM includes P&E's Embedded Multilink circuitry, so no external hardware BDM tool is needed to debug and program the DEMOJM. A user only needs to connect the DEMOJM to their PC to start developing code for it.

The DEMOJM package comes with a special edition of Freescale's CodeWarrior studio. In addition, P&E's evaluation software for HCS08 and ColdFire® V1 is available in the DEMOJM Resources section of the Getting Started DVD, or online at [www.pemicro.com](http://www.pemicro.com). A user may use either CodeWarrior or P&E software tools to develop code for the DEMOJM.

## 9.1 Using CodeWarrior With The DEMOJM

The CodeWarrior studio supports Freescale's HCS08 and ColdFire V1 devices. It offers C, C++, and assembly-level support, and provides debugging capabilities based on P&E's debug and programming technologies.

A programming or debug session with the project-based CodeWarrior IDE may be launched by double-clicking on the project name (the format is *projectname.mcp*) from your file storage. Its tutorials, FAQs, and quick start guides are easy to follow and will allow you use pre-built templates to begin creating a new project in a short time. Codewarrior tutorials can be followed based on the instructions provided.

## **9.2 Using P&E Software With The DEMOJM**

P&E offers software tools for Freescale's HCS08 and ColdFire V1 devices that can be used to develop code for the DEMOJM board.

### **9.2.1 P&E Software Tools for HCS08 Microcontrollers**

For Freescale's HCS08 devices, P&E offers an integrated development environment, which combines a command-line assembler, in-circuit debugger, and flash memory programmer. The assembler includes features such as a full string replacement macro, conditional assembly, include files, and more. The debugger supports both assembly and C source-level debugging. The programmer can program/reprogram both internal and external flash devices in-circuit.

### **9.2.2 P&E's Software Tools for ColdFire® V1 Microcontrollers**

P&E offers an integrated development environment for Freescale's ColdFire V1 devices, which combines a GNU C compiler, in-circuit debugger, and flash memory programmer. The debugger supports both assembly and C source-level debugging. The programmer can program/reprogram both internal and external flash devices in-circuit.

## **10 TRANSITIONING TO YOUR OWN TARGET**

Once you have finished working with the DEMOJM and are ready to build your own target, you will need a hardware tool to allow you to develop using your own board. P&E's USB Multilink and P&E's Cyclone PRO offer two effective solutions, depending on your needs. Both work with Freescale's CodeWarrior as well as P&E software, and both provide a seamless transition to working with your own hardware.

The USB Multilink is a development tool that is functionally comparable to the Embedded Multilink circuitry on the DEMOJM. It will enable you to debug your

code and program it onto your target. The Cyclone PRO is a more versatile and robust development tool with advanced features and production capabilities.

More information is available below to assist you in choosing the appropriate development tool for your needs.

## **10.1 Hardware Solutions At A Glance**

The USB Multilink offers an affordable and compact solution for your development needs, and allows debugging and programming to be accomplished simply and efficiently. Those doing rapid development will find the USB Multilink easy to use and fully capable of fast-paced debugging and programming.

The Cyclone PRO is a more complete solution designed for both development and production. The Cyclone PRO features automated power switching, multiple communications interfaces (including USB, Ethernet, and Serial), stand-alone programming functionality, and many other advanced capabilities.

Below is an overview of the features and intended use of the USB Multilink and Cyclone PRO.

### **10.1.1 USB Multilink Key Features**

- Direct user control of target's execution
- Programming and debugging capabilities
- Read/write registers and memory values
- Compact and lightweight
- Communication via USB 2.0
- Supported by P&E software and Freescale's CodeWarrior

### **10.1.2 Cyclone PRO Key Features**

Advanced programming and debugging capabilities, including:

- PC-Controlled and User-Controlled Stand-Alone Operation
- Interactive Programming via Host PC
- In-Circuit Debugging, Programming, and Testing



- Compatible with Freescale's ColdFireV1, HCS08, RS08, and HC(S)12(X) microcontroller families
- Communication via USB, Serial, and Ethernet Ports
- Multiple image storage
- LCD screen menu interface
- Supported by P&E software and Freescale's CodeWarrior

## 10.2 Working With P&E's USB Multilink



**Figure 10-1: P&E's USB Multilink (USB-ML-12 shown)**

### 10.2.1 Product Features & Implementation

P&E's USB Multilink Interface (USB-ML-12) connects your target to your PC and allows the PC access to the Background Debug Mode (BDM) on Freescale's ColdFireV1, HCS08, RS08, and HC(S)12(X) microcontrollers. It connects between a USB port on a Windows 2000/XP/2003/Vista machine and a standard 6-pin debug connector on the target.

By using the USB Multilink Interface, the user can take advantage of the background debug mode to halt normal processor execution and use a PC to control the processor. The user can then directly control the target's execution, read/write registers and memory values, debug code on the processor, and program internal or external FLASH memory devices. The USB Multilink enables you to debug, program, and test your code on your board.

### 10.2.2 Software

The USB Multilink Interface works with Codewarrior as well as P&E's in-circuit debugger and flash programmer to allow debug and flash programming of the

target processor. P&E's USB Multilink Development Packages come with the USB Multilink Interface, as well as flash programming software, in-circuit debugging software, Windows IDE, and register file editor.

## 10.3 Working With P&E's Cyclone PRO



**Figure 10-2: P&E's Cyclone PRO**

### 10.3.1 Product Features & Implementation

P&E's Cyclone PRO is an extremely flexible tool designed for debugging, testing, and in-circuit flash programming of Freescale's ColdFireV1, HC08, HCS08, RS08, and HC(S)12(X) microcontrollers. The Cyclone PRO connects your target to the PC via USB, Ethernet, or Serial Port and enables you to debug your code, program, and test it on your board. After development is complete the Cyclone PRO can be used as a production tool on your manufacturing floor.

For production, the Cyclone PRO may be operated interactively via Windows-based programming applications as well as under batch or .dll commands from a PC. Once loaded with data by a PC it can be disconnected and operated manually in a stand-alone mode via the LCD menu and control buttons. The Cyclone PRO has over 3Mbytes of non-volatile memory, which allows the on-board storage of multiple programming images. When connected to a PC for programming or loading it can communicate via the ethernet, USB, or serial interfaces.

### 10.3.2 Software

The Cyclone PRO comes with intuitive configuration software and interactive programming software, as well as easy to use automated control software. The Cyclone PRO also functions as a full-featured debug interface, and is

supported by Freescale's CodeWarrior as well as development software from P&E.

P&E's Cyclone PRO is also available bundled with additional software as part of various Development Packages. In addition to the Cyclone PRO, these Development Packages include in-circuit debugging software, flash programming software, a Windows IDE, and register file editor.

## 11 TROUBLESHOOTING

### 11.1 DEMOJM Is Undetected

**Q:** The connection assistant indicates that my DEMOJM is undetected even though I have connected the hardware to my USB port. What should I do?

**A:** The connection assistant, which displays in either Codewarrior or P&E's development software, is a dialog which allows the user to connect to the DEMOJM hardware. If this dialog indicates that the DEMOJM hardware is not connected to the PC, the first step is to make sure that the DEMOJM hardware is connected to the PC via a USB 2.0 high-speed cable. If it is connected, unplug and then plug in the USB cable on the DEMOJM board and click refresh in the connection assistant. If the hardware still does not show up, try the following remedies:

#### **(A) Re-Enable the USB driver**

If you connected the DEMOJM interface prior to the installation of P&E's Embedded Multilink drivers, Windows will not have been able to find the appropriate driver and may have disabled the device. The DEMOJM board shows up in Window's device manager as a "P&E Multilink," since it contains P&E's Embedded Multilink circuitry. If you unplug and then plug in the device, Windows will automatically disable it even if you have installed the drivers. To force windows to try to load the driver again, perform the following steps while the DEMOJM interface is connected to the computer:

1. Open the Control Panel (Start Button->Settings->Control Panel)
2. Double Click the "System" Icon
3. Select the "Hardware" tab
4. Click the "Device Manager" Button
5. The "P&E Multilink" device will be shown with an exclamation mark

next to it. Double-click this device.

6. Click the "Reinstall Driver..." button and follow the dialog instructions to have Windows automatically install the driver.

### **(B) Re-Install the USB driver**

If the Multilink device does not show up in the device manager, use the driver installation utility located in the DEMOJM Resources on the DVD-ROM. After driver installation, unplug the DEMOJM from the PC and reboot the PC. When the reboot has completed, connect the interface to the PC with the USB 2.0 cable. Run the software again to see if the interface is now detected.

If you have an error attempting to install the drivers, please view the installation troubleshooting FAQ on P&E's website at:

[http://www.pemicro.com/faqs/faq\\_view.cfm?id=89](http://www.pemicro.com/faqs/faq_view.cfm?id=89).

### **(C) Test for installation of the USB driver files**

To test the driver installation, use the driver test utility in the DEMOJM Resources of the DVD-ROM to make sure all files were properly installed. This may give some indication of what the problem is.

### **(D) Using a USB Hub**

The DEMOJM is a high-power USB device. If a USB Hub is used, it must be a self-powered hub (i.e., with its own power supply). If the Hub is not self-powered the DEMOJM will not work. In general, USB ports located directly on the PC are high-power (self-powered) ports.

## **11.2 CodeWarrior Installation Fails (WinDriver Error)**

**Q:** When I try to install the Codewarrior or P&E software, installation fails with this message: "There are currently 2 open applications using WinDriver. Please close all applications and press Retry. To reload WinDriver, press Cancel and reboot." How do I solve this?

**A:** Some software applications on your PC are connected to the WinDriver system driver which manages P&E's USB connections. This system driver needs to be disabled for the installation to continue. Directions to disable Windriver are as follows:

In Windows Explorer, right-click on My Computer and select Properties from the drop-down menu.

1. Select the Hardware tab.

2. Click on the Device Manager button.
3. Select the "System Devices" in the Device Manager window.
4. Expand the tree index (+) for System Devices.
5. At the bottom of the System Devices list you should see the WinDriver item.
6. Right-click on WinDriver and select Disable from the drop-down menu.
7. Click Yes/OK when the confirmation dialog appears.

WinDriver is now disabled and you should be able to complete the installation. After the installation finishes, you should re-enable the WinDriver system driver using the following steps:

In Windows Explorer, right-click on My Computer and select Properties from the drop-down menu.

1. Select the Hardware tab.
2. Click on the Device Manager button.
3. Select the "System Devices" in the Device Manager window.
4. Expand the tree index (+) for System Devices.
5. At the bottom of the System Devices list, you should see a WinDriver item.
6. Right-click on WinDriver and select Enable from the drop-down menu.

Reboot your PC after the installation finishes.

If you are unable to disable the WinDriver system driver in the above fashion, you can delete the file `c:\windows\system32\windrvr6.sys` and then reboot your machine. You should then re-run the installer and complete the procedure. Reboot your machine after the installation has finished.





DEMOJUM  
Rev. 1.00  
November 2008

## *Freescal<sup>®</sup> Controller Continuum*

...68HC08/S08/RS08/(S)12(X)... ColdFire<sup>®</sup> V1... ColdFire<sup>®</sup> V2/V3/V4... PowerPC<sup>®</sup>... Nexus<sup>®</sup>... ARM<sup>®</sup>...



©2008, P&E Microcomputer Systems, Inc. All rights reserved.

P&E Microcomputer Systems, Inc.  
P.O. Box 2044  
Woburn, MA 01888

[www.pemicro.com](http://www.pemicro.com)

Freescal<sup>™</sup> and the Freescal logo are trademarks of Freescal Semiconductor, Inc.  
All other product or service names are the property of their respective owners.  
© Freescal Semiconductor, Inc. 2008.